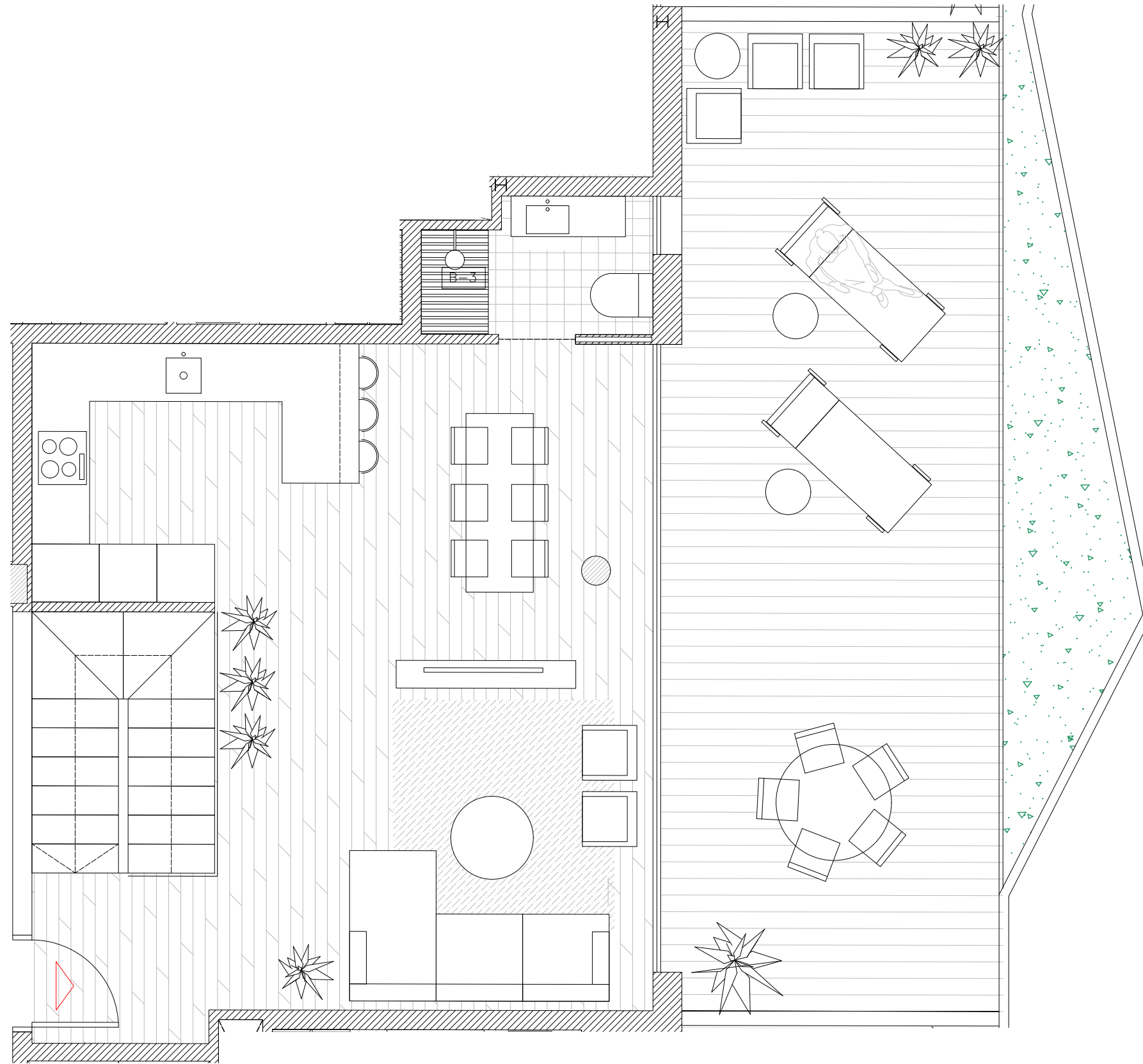
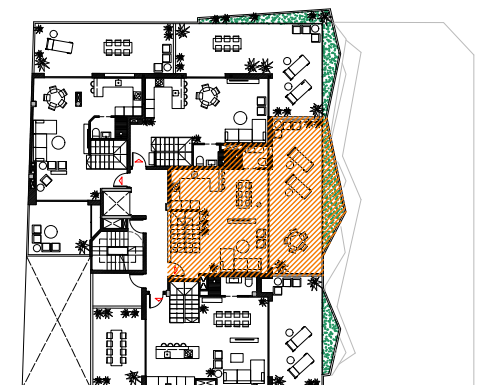
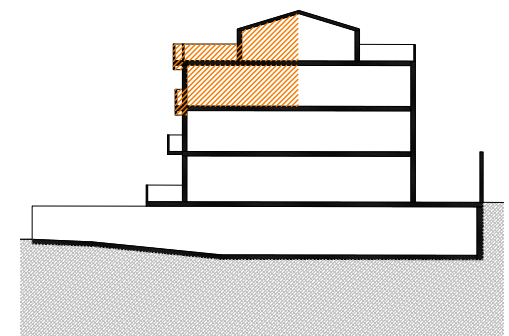


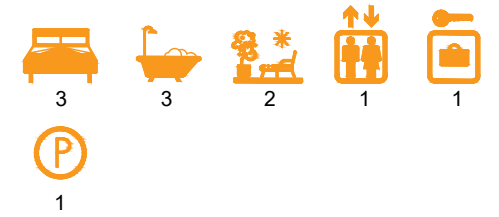
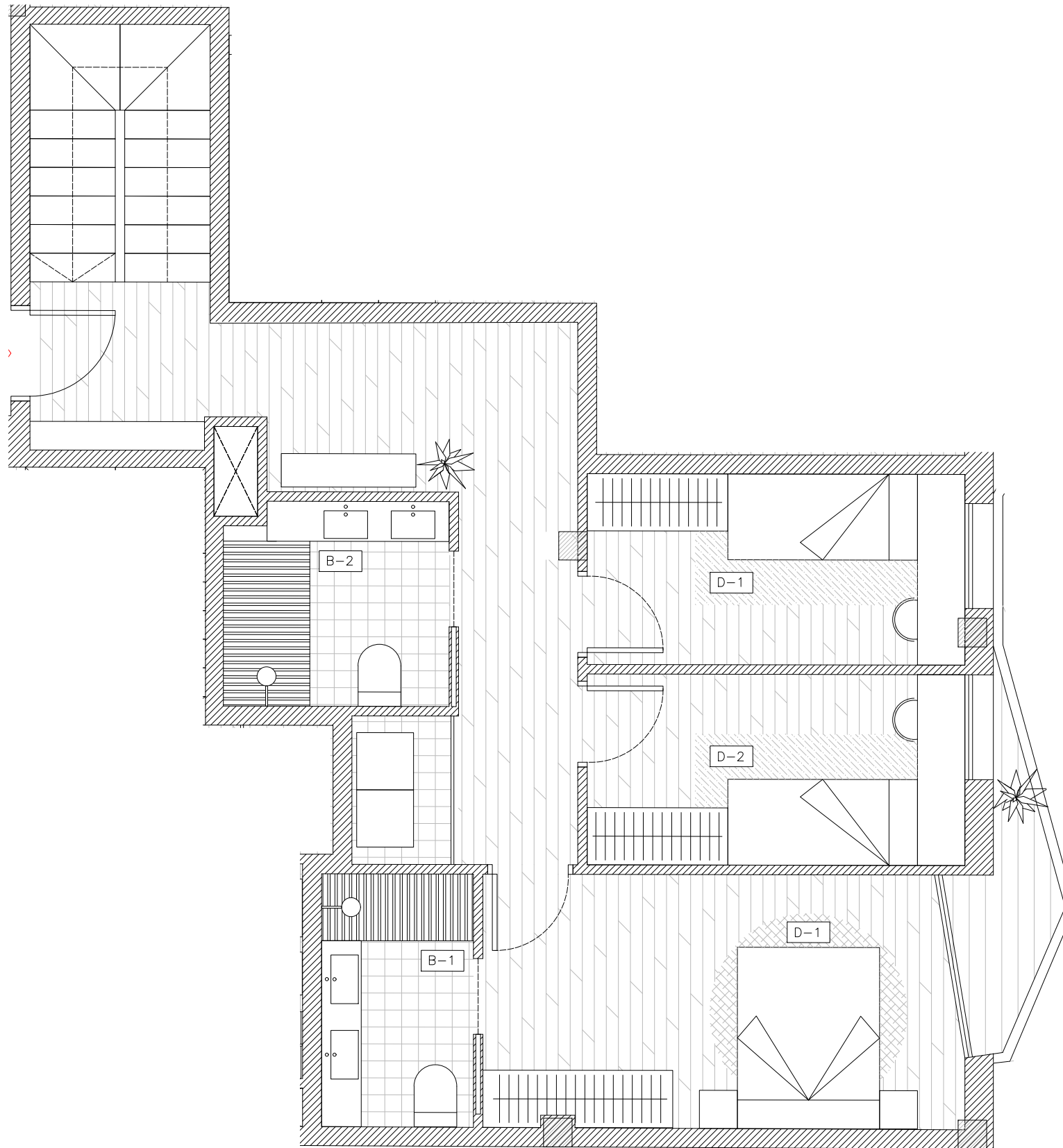
| SUPERFICIES P. BAJOCUBIERTA VIV. 3º-3º | |
|---|---------------------------|
| | SUP. ÚTIL |
| ESTAR-COMEDOR-COCINA | 36.38m ² |
| BAÑO 3 | 3.16m ² |
| ESCALERA | 5.46m ² |
| HALL ENTRADA | 3.31m ² |
| TERRAZA | 33.76m ² |
| TOTAL S.ÚTIL | 39.53m² |
| TOTAL S.CONSTRUIDA | 53.29m² |

| SUPERFICIES TOTAL DUPLEX VIV. 3º-3º | |
|--|-----------------------------|
| | SUP. ÚTIL |
| | 102.76 m ² |
| SUP. CONST. | 122.96 m² |

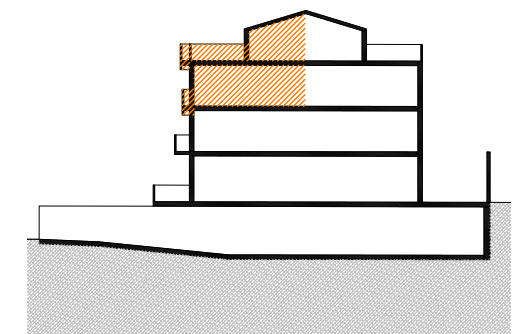


PENDIENTE DE APROBACIÓN DE LICENCIA POR EL AYUNTAMIENTO





| SUPERFICIES P. SEGUNDA – VIV. 3º-3º | |
|-------------------------------------|---------------------------|
| | SUP. ÚTILS |
| HABITACIÓN 1 | 13.17m ² |
| HABITACIÓN 2 | 7.97m ² |
| HABITACIÓN 3 | 7.97m ² |
| BAÑO 1 | 4.25m ² |
| BAÑO 2 | 4.99m ² |
| LAVADERO | 1.63m ² |
| DISTRIBUIDOR | 17.56m ² |
| TERRAZA | 1.99m ² |
| TOTAL S.ÚTIL | 57.54m² |
| TOTAL S.CONSTRUIDA | 69.35m² |



PENDIENTE DE APROBACIÓN DE LICENCIA POR EL AYUNTAMIENTO

